

# Karara Mining Limited

## Scope of Services for Train Loadout and Miscellaneous Site Services

### SYNOPSIS

*“This document has been prepared by Karara Mining Limited for its exclusive use (“the Purpose”). Use of this document other than for the Purpose is not permitted.”*

2000-CI-SOW-10031 - KARARA MINING LIMITED EXPANSION					
REV	DESCRIPTION	ORIG	REVIEW	KML APPROVER	DATE
A	Issued for Review	G Savell	P McAuliffe	G Savell	05th Nov 2020
A	Issued for Review	N Piacentini & Scott Lousich		N Piacentini & Scott Lousich	05 April 2024

**SCOPE OF SERVICES FOR TRAIN LOADOUT AND MISCELLANEOUS SITE SERVICES**

**CONTENTS**

1	INTRODUCTION .....	3
2	GLOSSARY .....	5
3	SCOPE OF SERVICES - TRAIN LOADING.....	7
4	SCOPE OF SERVICES 2 – SITE SERVICES.....	16
5	SCHEDULES .....	23
6	PROCEDURES, STANDARDS AND SPECIFICATIONS .....	24
7	HEALTH SAFETY AND ENVIRONMENT MANAGEMENT .....	26
8	SITE SUPERVISION AND MANAGEMENT .....	28
9	DOCUMENTATION AND REPORTING.....	34
10	QUALITY ASSURANCE AND TESTING.....	36
11	PROGRAMME.....	38

**SCOPE OF SERVICES FOR TRAIN LOADOUT AND MISCELLANEOUS SITE SERVICES**

**1 INTRODUCTION**

Karara Mining Limited (KML or Principal or Company) owns the Karara Railway Pty Ltd (KRPL) and the Karara Processing Plant facilities located at the Karara Mine site in Western Australia. The Train Loadout is operated by Karara Rail Pty Ltd (KRPL or Principal or Company) on behalf of Karara Mining Limited: See figure A.



**Figure A: Karara Mining Limited Plant, ROM and Rail Train Loadout Overview.**

The KRPL facilities include a Railway Station including Balloon Loop and Bad Order Siding and Stockpiling area in which the Company stores and loads products including but not limited to Hematite DSO and Magnetite Concentrate products. The Train Loadout stockpiling area is approximately 1300m x 250m in size. Product is loaded directly from the stockpiles by Front End Loader (FEL) onto trains within the designated Loadout area.

There are three separate process circuits at the KRPL Train Loadout;

1. **Conventional Stockpiling Operations (Stacker 8)** – Stockpile Management of Product from the Magnetite stacker conveying system to the Magnetite radial stockpile.
2. **Stockpiling Operations (Direct Shipping Ore)** - Material delivered to the Train Loadout Stockpiling area by truck and managed by FEL into discrete product stockpiles.
3. **Stockpiling of Wet Magnetite Concentrate** - Material delivered to the Train Loadout Stockpiling area by Haul truck and managed by FEL into discrete product stockpiles

**SCOPE OF SERVICES FOR TRAIN LOADOUT AND MISCELLANEOUS SITE SERVICES**

In order to complete train loading and stockpile maintenance activities, the Contractor shall undertake machine operations at the Company's train Loadout facility, located at the Company Site.

**SCOPE OF SERVICES FOR TRAIN LOADOUT AND MISCELLANEOUS SITE SERVICES**

**2 GLOSSARY**

Wherever the words “Company, Principal” are used, it shall mean Karara Mining Limited and/or Karara Rail Pty Ltd (as the context requires).

Wherever the words “Contractor, Supplier” are used it shall mean the person so named in the Contract (and its successors and permitted assigns).

Wherever the words “Company’s Representative, Purchaser’s Representative or Buyer’s Representative” are used, it shall mean the person so named in the Contract (and includes his or her successors and replacements from time to time).

<b>Term</b>	<b>Definition</b>
Authorities	Any statutory, public, municipal, governmental or administrative department, commission, authority, agency or entity with jurisdiction in connection with the WUC.
CDRL	Contractor Data and Document Requirements List.
COP	Code of Practice
Company’s Facility or Site	Includes KRPL and the Mine Site and any place or location where the Contractor is performing the Services or carrying out the WUC.
Company’s Requirements	Has the meaning ascribed to it in the Contract
Company’s Representative’s nominee	Means an individual or individuals appointed in writing by the Company’s Representative under the Contract.
Contract	The agreement between the Company and the Contractor to which this Scope of Services pertains.
CRAW	Critical Risk Assessment Worksheet
Execution Date	Means the date on which the Formal Instrument of Agreement is signed by the Company.
Equipment	Means the goods (if any) to be supplied or supplied by the Supplier.
EOM	End of Month
HAZOP	Hazard and Operability Review.
HSEC	Health, Safety, Environment and Community.
KML	Karara Mining Limited
KRPL	Karara Rail Pty Ltd
ONRSR	Office of the National Rail Safety Regulator
RPL	Recognition of Prior Learning
Services	Means the services (if any) to be supplied or supplied by the Contractor under the Contract including all ancillary or related services necessary for the supply of the Services.
SDRL	Supplier Data and Document Requirements List.

**SCOPE OF SERVICES FOR TRAIN LOADOUT AND MISCELLANEOUS SITE SERVICES**

<b>Term</b>	<b>Definition</b>
SoW	Scope of Work.
Supplementary Requirements	Specifications, standards, regulations and codes of practice set out at Section 6 of this Scope of Services
Tenderer	Means a person who lodges a tender for the Services.
VOC	Verification of Competence
Service or Services	Includes the supply of Equipment and/or Goods and/or Services
WUC	Means the whole of the Services to be carried out under the Contract.

**TABLE 1 – Key Terms**

### 3 SCOPE OF SERVICES - TRAIN LOADING

#### 3.1 Location

The Company's train loading area location is identified in figure 1.



Figure 1: Plan of Karara Train Loadout – Magnetite Stockpiles

#### 3.2 Services Included

The Contractor shall:

- Provide sufficient labour, equipment and resources to perform all Services within the limits of the Scope

**Note:** *The Company shall provide management of the Train Loadout in accordance with Laws, Regulations, Standards, Codes and other relevant statutory authority requirements and the Principal's policies, procedures, plans and standards, as amended from time to time;*

- Prepare, maintain and make available, in accordance with accounting principles generally accepted in Australia, complete documentation relating to the Services;
- Provide all materials, consumables, tools, equipment, documentation, labour, supervision, workshop and all other services necessary for the site preparation and support for the planned

**SCOPE OF SERVICES FOR TRAIN LOADOUT AND MISCELLANEOUS SITE SERVICES**

general train loading and product handling works as required for the duration of the contracted Services;

- Area for the park up of plant.
- Plant & Equipment wash down pad and associated infrastructure, inclusive of bunded oil water separator facility.
- Toilet facilities.
- Crib room and office facilities.
- All power facilities including area lighting.

This Scope of Services includes a general outline of the requirements of the Services required to be supplied by the Contractor under the Contract.

In addition to the above it is the Contractor's responsibility to provide all personnel, equipment and services required to complete this WUC.

The specific exclusions detailed below will be provided by the Company:

- Water, from the Company's water storage facilities in accordance with Karara's procedures;
- Survey; pertaining to the volume of Iron Ore within the train Loadout stockpiles at various times of the month inclusive of end of month survey (EOM).

**3.3 Train Loadout and associated Performance Criteria****3.3.1 Train Loading**

The Contractor shall provide sufficient resources on a 24 hour a day basis to perform train loading operations as required to meet the Companies expected utilisation and other performance targets. Once commenced, loading of a train will continue until the train is loaded, or until the Company instructs the Contractor to cease loading, whichever is the sooner. The Company envisages loading various train types and axle loads up to 21 TAL and above, subject to change from time to time.

At the commencement of each train that is to be loaded, a train loading plan will be developed by the Contractors Shift Supervisor, this will be documented. All personnel involved in operations shall read, understand and sign the train loading plan at the pre-start meeting. Operators shall ensure that the work area is set up and handed over to the incoming shift in an operable and safe condition, ensuring the below tasks are completed before end of shift; (SEE FIGURE 1)

1. stockpiles are set up for efficient train loading operations
2. stockpile access is maintained and;
3. Any relevant information is communicated.

**3.3.1.1 PERFORMANCE CRITERIA**

- a) The time of train arrivals may vary during the day. The Services must be provided twenty-four (24) hours a day seven (7) days per week and the Contractor acknowledges the requirement to undertake loading as and when required and directed by the Company at all times.
- b) The normal capacity of each of the Company's trains is 7072 tonnes of Product (based on 104 wagons per train) as amended from time to time and the Contractor shall be prepared to load a minimum of 4 trains per day on each day of the calendar month



**SCOPE OF SERVICES FOR TRAIN LOADOUT AND MISCELLANEOUS SITE SERVICES**

(unless otherwise directed by the Company) and the Contractor acknowledges it will mobilise resources to meet this requirement as a minimum on an ongoing basis.

- c) The Company may increase or decrease the number of tonnes per day (including by increasing the number of wagons per train) and/or trains per day as required, for as long as is required by the Company, within the operational capacity of the Contractor's Site resources. Should such increase take the loading requirement beyond the capacity of the Contractor's resources, the Company Representative may request a Variation proposal from the Contractor pursuant to the Terms and Conditions.
- d) The Contractor will at all times follow the Train Loadout Procedure (as amended from time to time) when loading trains.
- e) Each train shall be loaded within 135 minutes from the time of the Company's direction to load and to the required performance criteria (as the case may be) (Production Requirements). The Production Requirements timing is inclusive of the reasonable time required for loading and completion of loading checks and criteria as described for in the Train Loadout Procedure (Completed Train Loading Event).
- f) Notwithstanding the requirements of section 3.3.1.1 (c), the Contractor must provide a train manifest document in electronic format (as directed by the Company) (MES Data) that shows information as directed by the Company, including number of tonnes in each wagon and overall train tonnage within 10 minutes of the completion of each Completed Train Loading Event, provided always that the provision of such train manifest not occur more than three (3) hours after the Company's direction to load the train.
- g) The Contractor acknowledges that:
  - a. failure to load within the required Production Requirements; and
  - b. failure to provide the MES Data in the required timeframe; and
  - c. failure to load in line with the Train Loadout Procedure,  
may result in the loss of Train Path/s by the Company (together '**Affected Train Path Event**'); and
  - d. If an **Affected Train Path Event** occurs due to an act or omission by the Contractor;
    - i. all plant and labour hours incurred as result of an Affected Train Path Event may be recorded and verified by the Company,
    - ii. the Contractor's total claimable cost for the Affected Train Path Event' will be capped at \$1,493 per fully loaded train (calculated at 2.5 hrs \* 2 Loaders \* Loader hourly rate),
    - iii. no additional costs are payable by the Company to the Contractor for additional activities or costs incurred by the Contractor in order to make good and/or remedy the Affected Train Path Event as per the provisions of section 3.3.1.2
- h) Liquidated damages for failing to achieve Train Loading Performance Criteria will apply in the circumstances set out below and will be a debt owed by the Contractor to the Principal. The amount of liquidated damages will be based on the aggregate of the number of wagons, which the Contractor acknowledges is an estimate of loss suffered by the Principal and not a penalty, as follows:
  - a. an amount of \$724.20 per wagon for wagons provided for loading during the month which the Contractor fails to load and are empty when the train departs at or after the expiry of the period referred to in section 3.3.1.1 (e); and
  - b. an amount of \$724.20 per wagon for wagons during the month which were to arrive at Site in accordance with the scheduled Train Paths but were cancelled as a result of the Contractor's inability to load the wagons.

**SCOPE OF SERVICES FOR TRAIN LOADOUT AND MISCELLANEOUS SITE SERVICES**

- i) The Contractor is required to achieve a minimum of 99% (in any cumulative three-month period) of trains loaded in the required timeframe (including on time provision of MES Data) and in accordance with the Train Loadout Procedure (Loading Target). Should the Contractor fail to achieve the Loading Target a Termination Event is deemed to have occurred (Performance Shortfall).
- j) The Contractor is required to meet the specifications defined by the loading requirements for wagons, wagon axles and associated weight distribution, etc. for wagons set out in the Train Loadout Procedure:
  - a. All wagons must be loaded to the rated capacity of the wagon (68 tonnes) unless otherwise directed by the Company;
  - b. The fill factor of each wagon must be 99% of the rated capacity of the wagon (68 tonnes);
  - c. For all loaded trains the following must be met:
    - i. At least 90% of wagons are loaded to a total weight of wagon plus contents (**Wagon Weight**) that is equal to or less than 85.7 tonnes;
    - ii. At least 90% of wheels are loaded to a wheel load that is equal to or less than 11.1 tonnes;
    - iii. 100% of wagons are loaded to a Wagon Weight that is equal to or less than 90 tonnes;
    - iv. At least 99% of wheels are loaded to a wheel load that is equal to or less than 11.4 tonnes; and
    - v. 100% of wheels are loaded to a wheel load that is equal to or less than 11.7 tonnes,(together the **Tolerances**).

**3.3.1.2 PRODUCTION REQUIREMENTS**

- a) As at the Commencement Date the Contractor is required to perform train loading as required by the Production Requirements.
- b) Subject to section 3.3.1.1 (c), the Company may vary the Production Requirements required on a daily or weekly basis as it requires.
- c) Subject to section 3.3.1.1 (c), the Company may increase or decrease the Production Requirements (at its discretion) and must give reasonable notice for the Contractor to mobilise additional resources or demobilise resources should the operational capacity of the Contractor's plant and equipment require this in order to meet the Company's revised Production Requirements.
- d) For the avoidance of doubt, 'reasonable notice', in the context of (b) and (c) means:
  - i. in the case of (b) a change to the Production Requirements that can be achieved with existing Site resources – immediately;
  - ii. in the case of (c) the requirement to mobilise additional resources or demobilise resources, as quickly as is practicable for the Contractor to mobilise or demobilise them, with the Contractor using best endeavours to mobilise or demobilise as expeditiously as possible.

**3.3.1.3 COMPANY REMEDY NOTICE**

- a) If the Contractor fails to meet Production Requirements due to an act or omission of the Contractor (Production Shortfall), or Performance Shortfall the Principal may give the Contractor:

**SCOPE OF SERVICES FOR TRAIN LOADOUT AND MISCELLANEOUS SITE SERVICES**

- i. a written notice specifying the date by which the Contractor must rectify the Production Shortfall to the extent that the Production Shortfall is capable of rectification; or
  - ii. if the Production Shortfall is incapable of rectification, a written notice specifying the Principal's requirements to overcome or cure the effects of that breach and prevent the breach from recurring (Cure Plan).
- b) If the Principal gives the Contractor a written notice referred to in section 5.3.4(a) the Contractor must comply with the written notice within the time stated in the notice.
- c) A Termination Event is deemed to have occurred if:
  - i. A Production Shortfall occurs three (3) times in any one month period; or
  - ii. the Contractor fails to rectify or effect the Cure Plan to meet the Production Requirements

**3.3.2 Stockpile Management**

The Contractor shall provide sufficient resources on a 24 hour a day basis to perform stockpiling operations as required to meet the companies expected utilisation and other performance targets.

The Contractor shall provide all labour, materials and consumables, all other services required, equipment, transport to Site and construction, testing, commissioning, operation, inspection and maintenance of all associated equipment, for the provision of the Services including:

- i. Being responsible for pushing up, rehandle and preparation of dumped or stacked Product into stockpiles ready for train loading;
- ii. Providing and maintaining sufficient loading equipment capable of loading train wagons within the designated loading time, as amended from time to time as instructed by the Company;
- iii. Undertaking train loading area, maintenance clean-up and other duties as directed;
- iv. Being required to maintain the floors of all the stockpiles (rail siding) to within +/- 100mm of nominated stockpile base R/L, and make good any areas that are not within this tolerance as a result of the Contractor's' activities. All material used for this purpose must be approved by the Company;
- v. Providing and operating dust suppression facilities and equipment to extinguish dust generation from the Site and the stockpile pad areas, the stockpiles and train loading area;
- vi. Providing and maintaining water cart/s to suit the stand pipe arrangements that are provided by the Company;
- vii. Installing suitable equipment for measuring and recording loaded quantities of Product onto all nominated loading equipment. For instance, in the case of front end loaders, a suitable device may be Loadrite. All such equipment must be calibrated in accordance with the Company's requirements as specified in the Train Loadout Procedure;
- viii. Maintaining the train loading area in a safe and clean condition at all times. Any spillage that occurs over the rail line must be cleaned from the line under the direction of the Company Supervisor before the arrival of the next train or as otherwise directed by the Company Supervisor. The Contractor and shall remove the material to locations as directed by the Company; and
- ix. Communicate with the train during train loading and provide confirmation at the completion of train loading that the train has been loaded in accordance with the Train Loadout Procedure and that a train manifest is available for release of the train from the siding.

**SCOPE OF SERVICES FOR TRAIN LOADOUT AND MISCELLANEOUS SITE SERVICES****3.3.2.1 MAGNETITE**

When stockpiling Magnetite, the stacker discharge creates a radial stockpile within the Loadout one area by maintaining an arc of movement until the stockpile reaches a pre-determined height as measured by the level transmitters mounted on the stacker discharge chute at which time the stacker may move automatically to allow continuous operations.

When the stockpile reaches the desired height the stacker moves automatically in an arc from north to south and vice versa within predetermined limits. If the stockpile reaches, a high-high level setting, an Inloading stop sequence will be initiated. The stacker may be locked into a predesignated location which will enable direct loading to the train without the need for stockpile maintenance during train loading operations.

The Company will work with the Contractor and provide a guide as to train arrival times, to allow the Contractor to resource accordingly. The Contractor shall source and install the appropriate equipment to ensure that the Loadout floor RL is maintained at all times. All stockpile management work shall be managed to ensure that there is no cross contamination of products and that the agreed physical separation of stockpiles is maintained, i.e. 20 meters between stockpiles of differing material or grades.

All High Risk activities carried out within the contractor area shall be completed under JHA and with approval from the Company representative or Alternate. This work includes, High Risk Maintenance works and includes abnormal machine activities outside of approved operations.

**3.3.2.2 DIRECT SHIPPING ORE (DSO)**

When stockpiling DSO the stockpiles are created by truck based inloading operations to the stockpiling area. Stockpiles shall be created to ensure Quality and Quantity standards are maintained and that ship load requirements are considered for grade control and other purposes.

DSO Stockpiles can be either Lump or Fines and the Contractor shall ensure appropriate separation is maintained between product types and grades at all times.

Stockpiles shall be created to optimise the tramming distance to the train line to ensure train loading operations are maintained within the time allowance and to the load profile required by Rail Legislation.

The Contractor shall source and install the appropriate equipment to ensure that the loadout floor RL is maintained at all times. All stockpile management work shall be managed to ensure that there is no cross contamination of products and that the agreed physical separation of stockpiles is maintained, i.e. 20 meters between stockpiles of differing material or grades.

All High Risk activities carried out within the contractor area shall be completed under JHA and with approval from the Company representative or Alternate. This work includes, High Risk Maintenance works and includes abnormal machine activities outside of approved operations.

**3.4 Drainage****3.4.1 Surface drainage**

- a) The Contractor is responsible for drainage of all water. The Contractor shall carry out the development and maintenance of surface drainage to locations approved by the Company for Stockpiles and train loading area in general.

## SCOPE OF SERVICES FOR TRAIN LOADOUT AND MISCELLANEOUS SITE SERVICES

- b) Drainage water shall be diverted to locations as directed by the Company to ensure that water runs into the major catchment drains or sumps and must go via settlement ponds before being discharged into the environment.
- c) The Contractor shall be responsible for the cleaning of catch drains and associated sumps and any pre-existing catch drains.

### 3.4.2 Procedures

- a) The Contractor shall develop and implement procedures to comply with the overall drainage design as approved by the Company. This design, which may be changed from time to time, will direct flow towards designated sumps or settlement ponds/dams.
- b) The Contractor shall competently manage the nature and extent of required drainage works and will ensure that all required plant, labour and drainage consumables including culverts, pumps and polyethylene piping and all necessary fittings are provided to achieve and maintain drainage of all water.

## 3.5 Detailed Description of Scope of Services

### 3.5.1 Contractor's Plant & Equipment

The Contractor (in agreement with the Company) will mobilize, at minimum, the following plant and equipment to Company Site for the purposes of performing the Services:

#### Primary

- **Minimum of 4 x current model new or low hour (<2500 hours) Front End Loaders** with capacity to pick and carry at an individual rate of 1700 tonnes per hour maximum and an average rate of 1,700 tonnes per machine in material with a Bulk Density of 2.55 tonnes per cubic metre.
- **Each Front End Loader shall be fitted with:**
  - a Blade Bucket system in replacement of the general earthmoving (Toothed) system
  - Proximity sensing equipment active in both forward and reverse to allow for close operation around structure
  - GPS system to provide RL guidance pertaining to floor and structure identification and collision control
  - Communications system compatible to the Companies private UHF radio communications system and the KRPL Rail Radio system
  - Machine lighting system to allow for operations in a dark environment.
  - Scrubber system to prevent/mitigate release of diesel particulates to the environment
  - Gas and infrastructure warning devices (in Cab).
  - Lean Burn or other fuel saving technology with a fuel burn rate of not more than --- litres per hour whilst in operations.
- **Secondary minimum of 1x Service Truck** for daily servicing of mobile equipment, containing mobile spill kit.

#### Support Equipment

- **Rubber tracked Excavator** or equivalent with the following attachments:

**SCOPE OF SERVICES FOR TRAIN LOADOUT AND MISCELLANEOUS SITE SERVICES**

- Clam shell bucket for correction of overloads
- Rail broom
- **Diesel Bulk Tank** - Approved tank that meets statutory requirements
- **Water Cart for general dust suppression and replenishment of the Train Veneering system water tanks**
- **Grader for product recovery and floor correction**
- **1 x Long Reach Excavator for clearing of wet cons dams (Contractor Owned)**
- **1 x Long Reach Excavator for clearing of wet cons dams (KML Owned)**
- **Minimum 2 Articulated dump trucks for clearing of wet cons dam to storage area**
- **Other equipment as required to complete the Scope of Services.**

Due to the environmentally sensitive nature of the Site and its surrounds all mobile plant and machinery must be thoroughly washed and cleaned prior to being mobilised to Site. The Company's Representative will inspect the plant and machinery prior to its entry to the Site and the Company's Representative may direct any plant or machinery to be further washed or cleaned if the state of cleanliness is unsatisfactory.

**3.5.2 Plant and Equipment Specifications**

Mobile equipment for loading of Products shall be maintained to company specification and follow all site pre-mobilisation plant procedures. All plant available may be required in any combination to meet train loading requirements as production levels fluctuate.

The Contractor warrants that the plant and equipment including the Mobile Service Truck is sufficient to undertake daily operations, including train loading, stockpiling and machine servicing in order to support operational requirements. If the any of the equipment proves insufficient for this task, the Contractor will mobilize additional resources at its own cost.

In the instance that the Contractor is unable to meet the design rate of 1700 tonnes per hour per machine during the life of the Contract, the Contractor will mobilise additional machines to meet the design rate at the Contractors cost.

No plant or equipment will be mobilized or demobilized to/from the Company Site without the prior approval of the Company.

**3.5.3 Plant and Equipment Reliability**

- a) The contractor shall maintain their plant and equipment to enable the availability percentage of 100% for all planned train loading activity and shall ensure machine maintenance compliments a target of 90% utilisation of availability whilst train loading is active.
- b) A detailed monthly maintenance plan shall be supplied to the Company detailing planned corrective and preventative maintenance activities are scheduled and performed to fully utilise operations downtime for maintenance purposes.
- c) The contractor shall supply a detailed Failure Mode Analysis (FMECA) Report to the Company Representative for all major unplanned plant equipment break downs.

**SCOPE OF SERVICES FOR TRAIN LOADOUT AND MISCELLANEOUS SITE SERVICES**

- d) The Contractor shall provide evidence of maintenance system compliance including condition monitoring information as requested by the company from time to time and in the body of detailed monthly report.

**3.5.4 Movement of heavy equipment at KRPL Train Loadout**

Machine movement outside of the normal operations area and requirements specified within this scope of Services must be authorised by the Company Representative or Delegate.

The Contractor shall ensure that:

- a) The path of travel for the machine to be moved is clear, and that a risk assessment including the need for a spotter and relevant supporting permits/permissions are authorised prior to the movement of the machine commencing.
- b) Ensure all critical items are functioning by completing a Pre Start Check, note any defects and report to the Contractor Supervisor,
- c) If at any stage the Contractor is uncertain or unsatisfied with the machine movement process, the Contractor Supervisor shall seek guidance and information from the Company Representative or Delegate for further direction.

SCOPE OF SERVICES FOR TRAIN LOADOUT AND MISCELLANEOUS SITE SERVICES

4 SCOPE OF SERVICES 2 – SITE SERVICES

4.1 Location

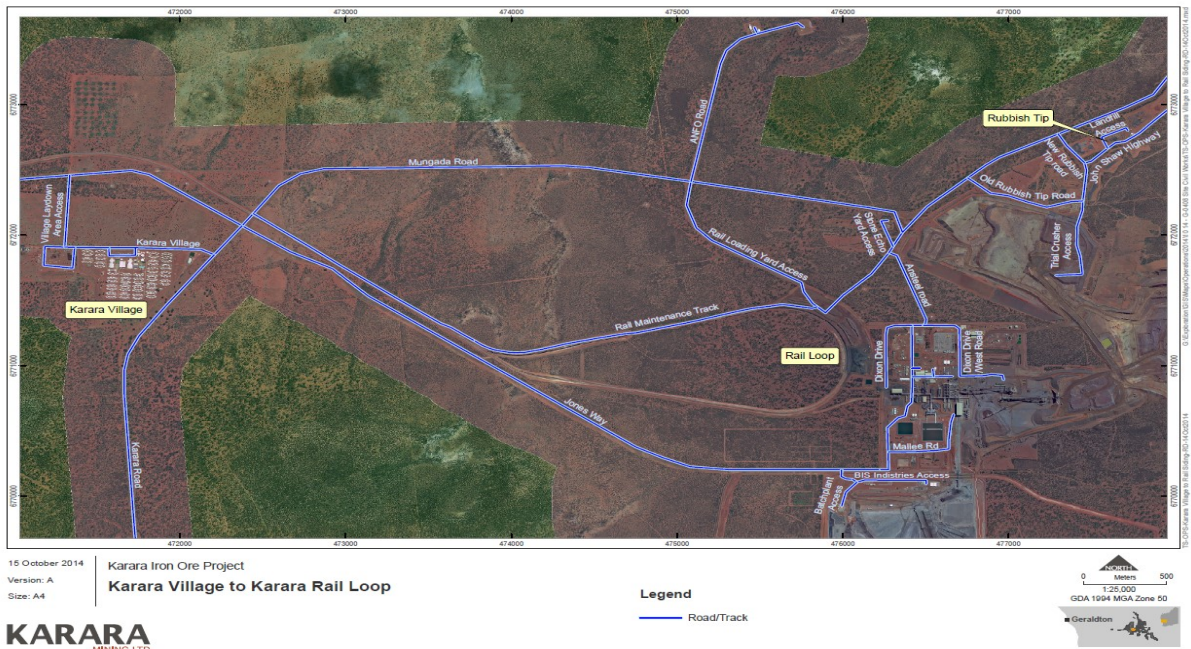
The Company’s Site Services area location is identified in figure 2.



Figure 2: Plan of Karara Plant Area



**SCOPE OF SERVICES FOR TRAIN LOADOUT AND MISCELLANEOUS SITE SERVICES**



**Figure 3: Plan of Karara Village to Rail Siding**



**Figure 4: Plan of Karara Plant and ROM Area**

**SCOPE OF SERVICES FOR TRAIN LOADOUT AND MISCELLANEOUS SITE SERVICES****4.2 General**

Unless noted elsewhere as an “Company’s Provided Items” pursuant to section 8.5 below, this is a day works rate scope for the provision of all materials, equipment, transport, fuels and consumables, tools, administration, labour, supervision, workshop and all other services necessary to mobilise, operate, maintain and demobilise resources for the purpose to carry out general civil works, civil maintenance, and civil support services as defined herein by the Company being Karara Mining Limited (KML) on an as required basis at the Site for the duration of the Services.

This Scope of Services shall be read in conjunction with the referenced drawings, specifications and procedures and may be amended from time to time.

**4.3 Site Safety and Site Access****4.3.1 Job Safety**

- a) The Contractor shall carry out all Services in a safe and professional manner and in accordance with the Mines Safety and Inspection Act and the regulations thereto as amended and the Contractor shall:
  - (i) Provide and maintain guarding, fencing, danger signs and other items necessary to ensure the safety of all personnel, plant and equipment engaged to the Site from hazards associated with the Contractor’s operations. At all times, access ways must be kept clear of objects or obstructions which could cause injury to personnel or damage to equipment and plant.
  - (ii) Provide and maintain all temporary facilities supplying water, power and compressed air during the Term and are to be regularly inspected and maintained at the required frequency as stated by the manufacturer and / or the Health, Safety, Environment and Community Management Plan(s) HSECMP.
  - (iii) Participate in a daily brief “Start of Shift” on-site meeting and report back to the KML Site Representative on the plan and work program for the day/shift following. The Contractor shall;
    - a) Hold weekly Tool Box meetings that shall be attended by all site personnel, contractors, subcontractors and KML Site Representative. Key issues discussed shall be recorded and a copy sent to KML Site Representative;
    - b) Participate in a weekly meeting with KML and any KML Consultants as directed by KML Contract Manager or delegate;
    - c) Prepare JHA’s (Job Hazard Analysis) for specific tasks as required by KML or as instructed by KML Site Representative; and
    - d) Be required to attend special meetings from time to time to discuss issues relating to Safety, Process compliance, cost saving and other initiatives to ensure contract success.

**4.3.2 Site Supervision and Management**

- b) The Contractor shall appoint a Site Supervisor who will be accountable for the Services and be the central point of contact for KML Site Representative.
- c) The Site Supervisor shall be a competent professional with significant understanding of such types of civil earthworks and General and Fixed Plant maintenance. An organization structure indicating all Supervisory personnel and key personnel shall be updated at all times.
- d) KML currently allows various roster designs and expects that the contractor shall follow the and comply with the principles contained within the Code of Practice for Fatigue

**SCOPE OF SERVICES FOR TRAIN LOADOUT AND MISCELLANEOUS SITE SERVICES**

Management in WA when designing and proposing a roster pattern for the required Services.

**4.4 Description of Other Services Included**

The nature of the Services will involve multiple planned and unplanned activities with work being labelled either,

- a) Wet Concentrate Dam Reclaim
- b) COS Management
- c) Essential Services,
- d) As required services,
- e) Discretionary services.

Therefore, the Contractor's ability and experience in time management and planning works ahead of schedule is an important consideration for KML. Essential services may need to be performed on night shift, for which the Company will provide as much notice to the Contractor as practical.

The Contractor shall provide management for all phases of the Services from site mobilisation through to pre-commissioning and the finalisation of all site Services, including but not necessarily limited to:

- a) Undertake planning activities for the required Services;
- b) Familiarise themselves with relevant Procedures, Specifications and Drawings, and ensure compliance with all requirements. Particular attention is required for Environmental requirements;
- c) The Contractor shall implement, maintain and update as necessary an approved (HSECMP) that meets or exceeds the requirements of the Company's HSECMP.
- d) Attend weekly safety, progress and coordination meetings facilitated by the KML Representative.
- e) Provide monthly reports in a format approved by the KML Representative in accordance with the Contract.
- f) Provide weekly reports on safety, manpower, plant and equipment in a format approved by the KML Representative.
- g) The Contractor shall check / verify the foundations, structure, interface or battery limit required for possession by the Contractor for the commencement of the Contractor's Services against the required Services. The Contractor shall immediately notify the KML Representative of any discrepancy or deficiency of such prior to commencement of Services.
- h) Obtain all statutory and other approvals, licenses and certificates as required, that are relevant to the Contractor's SOW.
- i) The Contractor may require onsite admin support and as such, the Contractor will supply and maintain modern communication and office equipment for its office and personnel to ensure that its personnel can manage and report the Services in an efficient manner.
- j) The Contractor will plan the execution of its Services in a manner that takes into account the access requirements of other Contractors engaged on the Site in such a manner that it is in cooperation with, and will cause the least amount of interference to the activities of other trades and Contractors at all times.
- k) The Contractor shall develop a Materials Management Plan for materials to be supplied by the Contractor. The Contractor's plan shall detail the process, steps and resources to be followed and allocated in order to successfully manage the supply of materials by the Contractor. The Plan shall detail from material take off through to incorporation of the materials into the constructed facilities. The Contractor's plan shall be submitted to the KML Representative within 1 month after award of Contract.

**SCOPE OF SERVICES FOR TRAIN LOADOUT AND MISCELLANEOUS SITE SERVICES****4.5 Detailed Description of Scope of Services**

The Contractor will be required to perform the relevant activities as described in the Figures below. A more detailed breakdown of the indicative plant mix and hours required on site is described in the Pricing Schedule.

**4.5.1 Wet Concentrate Dam Reclaim**

The recovery of wet concentrate from the eight wet concentrate cells will be performed on a 24/7 basis as required by the Company. The works will include reclaiming of a dry cell of wet concentrate and transport to the designated storage area for further drying before being transported to the TLO stockpiles. The following activities will require to be performed by the contractor:

- a) Operation of KML owned or contractor owned Longreach excavator to either ring bark cells for supporting the drying of concentrate or reclaiming directly to truck for cartage to stockpile area.
- b) Operation of articulated haul trucks to cart wet concentrate from the cell to the designated storage area for further drying.
- c) Operation of Front End Loader to side cast wet concentrate within each cell for reclaim and also general clean up during and on completion of reclaiming.

Cells 1 & 3 shall be reclaimed within seven days from commencement and Cells 2 & 4 shall be reclaimed within six days from commencement. Cells 5 & 7 shall be reclaimed within nine days from commencement and Cells 6 & 8 shall be reclaimed within eight days from commencement. All required housekeeping must be completed within the reclaim timeframe including battering of dam walls, clearing of spillage from top of wall and base of dam and any other general works to make the area safe for operation.



**SCOPE OF SERVICES FOR TRAIN LOADOUT AND MISCELLANEOUS SITE SERVICES**

**4.5.2 COS Management**

The management of the COS (Figure 4) during planned and unplanned shutdowns of the plant will require either of the following activities to occur on a 24/7 basis as required by the Company:

- a) Side casting of Coarse Ore when the cone reaches full height / capacity to prevent the Primary Crusher tripping
- b) Feeding (Push In) into the vault when the stockpile / feed from the Primary crusher gets low to prevent a reduction or loss of input feed to the processing plant.

Planned Shutdowns (Indication Only & Subject to Change):

January	Modular Shut Crusher 1 Shut	80 hrs 120 hrs	Side Cast Push In
February	Modular Shut Crusher 1 Shut	80 hrs 70 hrs	Side Cast Push In
March	Crusher 5 Shut Crusher 1 Shut Crusher 6 Shut	40 hrs 120 hrs 30 hrs	Side Cast Push In Side Cast
April	Major Plant Outage Crusher 1 Shut	48 hrs 55 hrs	Push In Push In
May	Modular Shut Crusher 1 Shut	80 hrs 120 hrs	Side Cast Push In
June	Crusher 5 Shut Crusher 1 Shut Crusher 6 Shut	30 hrs 55 hrs 30 hrs	Side Cast Push In Side Cast
July	Modular Shut Crusher 1 Shut	80 hrs 180 hrs	Side Cast Push In
August	Modular Shut Crusher 1 Shut	55 hrs 120 hrs	Side Cast Push In
September	Crusher 5 Shut	30 hrs	Side Cast
October	Modular Shut Crusher 1 Shut Crusher 6 Shut Crusher 1	80 hrs 120 hrs 30 hrs 55 hrs	Side Cast Push In Side Cast Push In
November	Modular Shut Crusher 1 Shut	80 hrs 55 hrs	Side Cast Push In
December	Crusher 5 Shut Crusher 1 Shut	30 hrs 120 hrs	Side Cast Push In

During planned shutdowns it will be an expectation that there are no plant disruptions with maximum throughput maintained and therefore hot seating and adequate resourcing will be required at all times during these shutdowns. Prioritising of work may be required during unplanned events between the contractor and company representatives.

**SCOPE OF SERVICES FOR TRAIN LOADOUT AND MISCELLANEOUS SITE SERVICES****4.5.3 Essential Services**

Essential services may need to be performed on night shift, for which the Company will provide as much notice to the Contractor as practical.

- a) Cart potable water from the RO tanks to the various village and office area's around site (Figure 2)
- b) Run water carts over roads around Karara's infrastructure areas (excluding mining areas) and Village for dust suppression. This is weather dependent in summer and winter (Figure 2, 3 & 4).
- c) Crusher cleaning for shutdown maintenance – Operating the long reach excavator to dig out the dump pocket prior to any shutdown (planned / unplanned).
- d) Filling rainstorm tank with water at rail loop (Figure 3).

**4.5.4 As Required Services**

- a) Dry tailings haulage support – Provision of dump trucks, front end loaders and other haulage support equipment (including labour) as required and directed by the Company
- b) Drainage works - establishing & reinstating drainage as required (Figure 4 & 5)
- c) Clean up plant ore spillages as required (Figure 3)
- d) Aerodrome Maintenance - Air strip rolling, surface maintenance and other minor civil works as required from time to time (Figure 2)
- e) General Environmental works - Pushing up at rubbish tip and hydrocarbon bund works (Figure 4)
- f) Rail - Road works & rail washout - Adhoc as requested at siding entry and Rail maintenance track (Figure 4)
- g) Grading & washouts - Grade and maintain roads including Exploration drive, around the plant and rail access roads (Figure 4)
- h) General civil/road works– General civil works and road modifications as required, installing windows, bunds, and clearing vegetation and stockpile or carry out the clearing and rehabilitation works in accordance with requirements (Figure 2);
- i) General civil earthworks, including digging footings and stripping topsoil and stockpile in accordance with project requirements (Figure 5);
- j) Provide dust suppression during site preparation activities, as requested (Figure 3 & 5);

**4.5.5 Discretionary Services**

- a) Grading / General civil / road works – Adhoc road grading in and around plant (Figure 5)
- b) Miscellaneous Processing works and General plant and labour hire (Figure 5)
- c) Provide ad-hoc civil support as required for the duration of the works, as requested (Figure 2)

Please note, all requests for ad-hoc civil support shall be obtained in writing from the requesting party.

**SCOPE OF SERVICES FOR TRAIN LOADOUT AND MISCELLANEOUS SITE SERVICES****5 SCHEDULES****5.1 Manning Schedule**

The Contractor shall provide a manning schedule showing planned resources required to execute the Services which shall be compliant with section 7 of this Scope of Services and the Code of Practice for Fatigue Management in WA. Differentiation shall be made between Field personnel, Office Personnel and others. The Contractor's Personnel will be made available for call outs and ad hoc Services from time to time as required by the Company.

The Contractor warrants the manning schedule detailed will be sufficient to provide operational coverage for The Services.

**5.1.1 General**

Labour Requirements includes, but is not limited to:

- 1 X Project Supervisor
- 1 X HSE Advisor

**5.1.2 Train Loadout Operations**

Labour Requirements includes, but is not limited to:

- 1 X Shift Supervisor (per crew)
- 2 X Experienced Operators (per crew)
- 1 X Heavy Earthmoving Fitter (per crew)
- 1 x Trades assistant (per crew)

**5.1.3 Miscellaneous Site Services**

Labour Requirements includes, but is not limited to:

*[Tenderers to propose]*

**SCOPE OF SERVICES FOR TRAIN LOADOUT AND MISCELLANEOUS SITE SERVICES**

**6 PROCEDURES, STANDARDS AND SPECIFICATIONS**

The Scope of Services shall be executed in accordance with, but not limited to, the following documents:

<b>Document No.</b>	<b>Title</b>
CORP-RL-PLN-1009_1	Rail Safety Management Plan
1570-RL-PRO-1003_11	Train Load Out Procedure
BKR-A100074_0	ARG Magnetite Wagon AOKF 2 Pack Arrangement
	Aerial of KML Karara Mine
	KML Train Loadout Area – May2020
CORP-RL-MAN-1002_2	Train Loading Extract From Rail General Appendix
	Weekly flight schedule
	Weekly bus barter
CORP-AD-FRM-1046_6	Site Entry Request Form
CORP-AD-FRM-1050_3	KML Personnel Compliance Verification
CORP-CI-SPC-1001_0	Mine Site Earthwork and Roadwork
CORP-EN-FRM-1009_3	Vehicle and Mobile Equipment Weed Inspection Form
CORP-EN-PLN-1008_3	Karara Corporate Standard - Environmental Plan - Fauna Management
CORP-EN-PLN-1010_4	Environmental Plan - Dust Management Plan
CORP-EN-PLN-1011_0	Environmental Plan – Floral and Vegetation Management Plan
CORP-EN-PLN-1013_2	Environmental Waste Management Plan
CORP-EN-PLN-1020_1	Operational Environment Management Plan
CORP-EN-PRO-1002_4	Environmental Procedure - Land Rehabilitation
CORP-EN-PRO-1004_3	Approval Requests and Ground Disturbance
CORP-EN-PRO-1011_1	Environmental Procedure – Surface Water Management
CORP-GE-SPC-1002_0	Packing, Marking and Documentation Instruction
CORP-HR-POL-1013_1	Site Commute & Regional Travel Policy
CORP-HS-FRM-1026_4	Excavation Penetration Permit Form
CORP-HS-FRM-1053_3	Mobile Plant, Equipment and Light Vehicle Access Request,



**SCOPE OF SERVICES FOR TRAIN LOADOUT AND MISCELLANEOUS SITE SERVICES**

	Inspection and Risk Assessment
CORP-HS-FRM-1085_3	HSE Contractor Prequalification Questionnaire
CORP-HS-PLN-1001_2	Karara Health and Safety Management Plan
CORP-HS-PLN-1003_6	Emergency Response Plan
CORP-HS-PLN-1008_3	Traffic Management Plan - Mining Operations
CORP-HS-PLN-1011_2	Health, Safety & Training Pre-mobilisation Requirements
CORP-HS-POL-1001_6	Karara Health and Safety Policy
CORP-HS-POL-1008_0	Life Savings Commitments
CORP-HS-POL-1031_2	Fatigue Management Policy
CORP-HS-POL-1032_0	KML Contractor HSEQ Guidelines
CORP-HS-PRO-1008_2	Mobile Plant, Equipment and Light Vehicle Procedure
CORP-HS-PRO-1015_1	Excavation and Penetration Procedure
CORP-HS-PRO-1022_1	Site Entry Procedure
CORP-HS-PRO-1041_0	OH&S Risk Management
CORP-HS-STD-1042_1	Storage and Use of Hazardous Substances Standard
CORP-QA-SPC-1003_0	Contractor Quality Requirements Specification
1000-PC-SPC-1002_4	Contractor Progress Reporting and Planning Specifications

**SCOPE OF SERVICES FOR TRAIN LOADOUT AND MISCELLANEOUS SITE SERVICES****7 HEALTH SAFETY AND ENVIRONMENT MANAGEMENT**

All Services must comply with the requirements of document CORP-HS-PLN-1001 Occupational Health and Safety Management Plan, CORP-RL-PLAN-1009 Rail Safety Management Plan and document CORP-EN-PLN-1020 Environmental Management Plan.

The Contractor shall prepare Contract Specific Health Safety, Rail Safety and Environment Management Plan information that aligns with Company requirements prior to mobilisation to the Company's Facility.

**7.1.1 Workplace Compliance**

- a) The Contractor shall develop and implement an auditable Safety Management System (SMS) i.e. Procedures, Standards, Policies and Practices to comply with the requirements of Laws, Regulations, Standards, Codes and other relevant statutory authority requirements in relation to all of the Contractor's activities performed under the Contract at the Karara Rail Pty Ltd Train Loadout and shall provide this information to the Principal or the Company Representative prior to mobilisation and upon request during the term of the Contract.
- b) The Contractor shall ensure the Contractor's Employees and personnel are competent in Assessment Requirements for "RIIMPO304E Conduct Wheel Loader Operations" in accordance with the requirements outlined within the Australian Government Training system or equivalent.

**Note:** In the instance that the Contractor proposes an alternative equivalent system, it shall be incumbent on the Contractor to provide independent evidence of compliance against the listed Unit of Competence.

The Contractor shall carry out all Services in a safe and professional manner and in accordance with the National Rail Safety Laws and Regulations and where applicable the Mines Safety and Inspection Act and the Regulations thereto as amended, in addition to the requirements of the Safety Management System approved by the Company.

The Contractor shall:

- 1) Provide and maintain guarding, fencing, bunding danger signs and other items necessary to ensure the safety of all personnel, plant and equipment engaged to the Site from hazards associated with the Contractor's operations and the WUC. At all times, access ways must be kept clear of objects or obstructions which could cause injury to personnel or damage to equipment and plant.
- 2) Provide and maintain all temporary facilities supplying water, power and compressed air which are to be regularly inspected and maintained at the required frequency as stated by the manufacturer and / or the Health, Safety, Environment and Community Management Plan(s) HSECMP as specified in **Section 7.1** below.
- 3) Conduct and present to the Company for approval a formal risk assessment (CRAW) pertaining to the Contractor's Operations and ensure:
- 4) The Contractors Employees are familiar with the requirements of the Risk Assessment whilst carrying out Services at the Company's Facility.
- 5) The Risk Assessment is maintained in an up to date format and is reviewed at intervals of not more than 12 Months, which shall be presented for review and approval to the Company Representative.
- 6) Ensure that all personnel (including any subcontractors and agents (where applicable)) have the following:
  - o Current Aurizon SCID (Safe Communication Identification Card);
  - o All current KML and KRPL Inductions, compliance and use of safety management tools (inclusive of CRAWs, JHAs, Plant inspections, Safe Act Observations & Take 5 Training) as described in KML and KRPL Procedures, Standards and Specifications

**SCOPE OF SERVICES FOR TRAIN LOADOUT AND MISCELLANEOUS SITE SERVICES**

- Appropriate VOC classification for the machinery or equipment they are operating;
  - Competence and Capacity to work in compliance with the Contractor's Safety Management Plan (except where the Company's Safety Management Plan takes precedence, whereby the Contractor shall ensure Competence and Capacity to the higher standard);
- 7) Hold weekly Tool Box meetings that shall be attended by all Contractor's site personnel, contractors, and subcontractors and as required by the Company Representative or Delegate. Key issues discussed shall be recorded and a copy sent to Company Representative or Delegate;
- 8) Participate in a monthly meeting with KRPL and any KRPL Consultants as directed by KRPL's Representative or delegate;
- 9) Prepare JHA's (Job Hazard Analysis) for specific tasks as required by KML and KRPL safety requirements or as instructed by KRPL Company Representative or Delegate; and
- 10) Personnel must satisfy and possess the requirements outlined below prior to undertaking operation of equipment at Karara Train Loadout (**TLO**) or Company's Facility:
- Satisfy Pre Employment medical requirements including a negative Drug and Alcohol screen
  - Complete Contractors Site Specific induction (Site Based induction)
  - KML General Induction
  - KRPL Rail Yard Induction
  - Completion of training log with 280 hours of direct and indirect practical training and experience for a trainee operator and 60 hours for an experienced operator

**Note:** In the instance of experienced operator RPL (Recognition of Prior Learning) information shall be supplied and verified prior to authorisation for the Contractor's employee to work unsupervised

- Deemed competent to operate by a Certificate IV Accredited Trainer and Assessor
- Read and demonstrate understanding of the safe operating procedures on the machine they are employed to operate

**SCOPE OF SERVICES FOR TRAIN LOADOUT AND MISCELLANEOUS SITE SERVICES****8 SITE SUPERVISION AND MANAGEMENT**

The Contractor shall maintain at all times an organization structure indicating all supervisory personnel and key personnel which shall be submitted to the Company for approval prior to mobilisation to Site and then annually for review. The Contractor shall propose a Project Supervisor who will be accountable for the Services and be the central point of contact for the Company Representative or Delegate; however, the Company shall maintain the right of refusal of the Contractors nominated Project Supervisor at the Companies discretion.

This structure shall include provision for the full supervision of the Services on a day to day, shift by shift basis by a competent Supervisor experienced in this type of Services (1 per crew) who shall as a minimum hold MSIA Section 44 competency and Cert IV in Leadership and Management.

The Project Supervisor shall be a competent professional with at least 5 years' experience in:

- 1) Supervising Train Loading Operations in a similar production loading environment, with;
- 2) Significant understanding of such types of stockpiling and product loading processes of bulk cargo, and;
- 3) Mobile Plant maintenance services, including planning, scheduling and record keeping relevant to Heavy Machinery maintenance.

**8.1 Battery Limits**

The battery limits for this Scope of Services are defined in the attachment to this Scope of Services

**8.2 General Description of Services Included in Operations**

The Contractor shall:

- a) Where applicable, supply, install and maintain all temporary safety equipment and materials for the protection of the Services and people for the duration of the Services on the Company's Facility in accordance with the Mines Safety and Inspection Act and Regulations, National Rail Safety Laws and Regulations and KML/KRPL Safety Requirements;
- b) If applicable, prepare and update on a regular basis, a Traffic Management Plan for the Contractor's areas of responsibility. This shall include, but not be limited to, erection and maintenance of all road traffic signs, radio call up points, restricted entry areas etc. to ensure safe Services and works;
- c) The Contractor shall plan manning and equipment hours to make efficient use of machinery whilst also limiting the fatigue of workers. The Code of Practice for Working Hours WA and Work Safe guidelines shall be used as a guide to work hours, breaks between shifts, fatigue management processes and KML/KRPL work requirements shall be adhered to;

**Note:** The Contractor shall ensure the utilised roster does not contravene the requirements of various laws, regulations, and acts and shall align to Company standards regarding FIFO/DIDO Rosters.

- d) Plan all Services pertaining to the contract in close consultation with the KRPL Company Representative or Delegate so that labour and equipment utilisation is used cost effectively and consistent with Company requirements;
- e) Liaise with the KRPL Company Representative or Delegate to ensure stockpiles are correctly managed. Stockpiles that are required to be relocated due to poor planning by the Contractor shall be relocated to a suitable location at the Contractor's expense; and
- f) Be responsible for the protection of all existing services and structures identified by KML/KRPL in the Services area. Any damage to known services and Structures caused by the Contractor shall be repaired at the Contractors expense.

**SCOPE OF SERVICES FOR TRAIN LOADOUT AND MISCELLANEOUS SITE SERVICES**

- g) Undertake planning activities for the required Services; i.e. Stockpiling Plan information shall be prepared and authorised at the commencement of each shift for the movement of stockpiles and Train Loading operations.
- h) Implement, maintain and update as necessary an approved Quality Plan and system that meets or exceeds the requirements of the Company's Quality Plan.
- i) Attend weekly safety, progress and coordination meetings facilitated by the Company Representative or Delegate.
- j) Provide monthly reports in a format approved by the Company Representative in accordance with the Contract.
- k) Provide weekly reports on safety, manpower, plant and equipment in a format approved by the Company Representative.
- l) Obtain and maintain all statutory and other approvals, licenses and certificates as required, that are relevant to the Contractor's SOW.

The Contractor will plan the execution of its Services in a manner that takes into account the access requirements of other Contractors engaged on the Site in such a manner that it is in cooperation with, and will cause the least amount of interference to the activities of other trades and Contractors at all times.

- m) The Contractor shall develop a Materials Management Plan for materials to be supplied by the Contractor. The Contractor's plan shall detail the process, steps and resources to be followed and allocated in order to successfully manage the supply of materials by the Contractor. The Plan shall detail from material take off through to incorporation of the materials into the constructed facilities. The Contractor's plan shall be submitted to the Company Representative within 1 week after award of Contract and prior to mobilisation to the Company's Facility.

While discussions on the job with KML/KRPL personnel are highly encouraged, such discussions shall not be or be deemed to be an approval for carrying out any job outside those described in this Scope of Services or otherwise authorised by the Company Representative or Delegate. Any Services carried out outside of this Scope of Services and without the prior written approval by the Company Representative shall be at the full responsibility and cost of the Contractor. Where such Services are deemed to be unsatisfactory, the Company Representative may instruct the Contractor to remove or rectify at the Contractor's expense.

Additional general Services under this Contract includes, but is not limited to:

- a) The supply of all materials unless noted elsewhere as free issue ('Excluded' / 'Company's Provided Items'), labour, tools, construction equipment, transport, fuels and consumables necessary for carrying out The Services.
- b) The Contractor shall allow for establishment on Site. This shall include, but not necessarily be limited to all necessary costs involved in mobilisation, demobilisation and on-going costs.
- c) The transport to Site of all plant, Contractor amenities, equipment, materials, consumables, store facilities, site office, crib rooms, workshops and hydrocarbon storage necessary for the Contractor to complete the Services.
- d) Mobilisation of the Contractor's personnel to the Project Site.
- e) The Contractor shall provide a site induction to all its personnel employed on the Project and allow for attendance of all its personnel for the Company's site inductions and training.
- f) Supply of personnel protective equipment (PPE) for the Contractor's personnel engaged on the Site.

**SCOPE OF SERVICES FOR TRAIN LOADOUT AND MISCELLANEOUS SITE SERVICES**

- g) The Contractor may nominate its preferred size of the area for its temporary site facilities, including storage areas. However, the ultimate size of the area allocated to the Contractor for this purpose is at the sole discretion of the Company Representative.
- h) The Company Representative shall make available a cleared area to the Contractor for its temporary site facilities and storage of materials. Supply and installation of security fencing will be the responsibility of the Contractor.
- i) Compressed air, water and electricity will not be guaranteed to the Contractor by the Company. The Contractor will be responsible and therefore shall provide all necessary plant, fittings, tools, distribution panels and the like to supply these utilities for its own use.
- j) Receiving and inspecting of Company and Contractor supplied items from delivery truck. Unloading and storage of free issue materials in accordance with the supplier's recommendations.
- k) Preparation, management and operation of an onsite secure storage facility to receive, handle and store all Company and Contractor supplied items required to complete the Services.
- l) Upon receipt of free issue materials, the Contractor shall be responsible for the security of the materials. Any loss or damage to the free issued materials following receipt shall be for the Contractor's account.
- m) Provide materials as required to protect equipment from the elements and damage of any kind whatsoever, such as impact, fire and the like by both the Contractor's personnel and that of others during the execution of the Services.
- n) Supply and erection of all temporary guards, barriers, and hand rails required for the execution of the Services.
- o) Assembly and installation of mechanical equipment related to the Contractor's workshop, plant and equipment.
- p) Transport and removal of all Contractor owned items used or stored on site during the Contract.
- q) The Contractor shall provide a provisional sum for restoration of the Contractor's Yard site after completion of the Contract.
- r) The Contractor shall maintain environmental and housekeeping standards within the Contractors Yard during the duration of the Contract at the cost of the Contractor.
- s) Regular clean-up of the work and Services areas in accordance with the Health, Safety, Environment and Community Management Plan(s) (HSECMP) and / or as directed by the Company Representative or Delegate. The Contractor shall also conduct a final clean-up of the work and Services areas upon completion of the Services.
- t) Segregation and disposal of all general waste materials on site as directed by the Company Representative or Delegate.
- u) Removal from site of all tyres, hydrocarbon and hazardous waste, including used or surplus chemicals, used chemical and hydrocarbon containers.
- v) Provision of necessary spares and other equipment to facilitate the efficient repair and maintenance of the machines to compliment Company requirements.

**8.3 Site Establishment, Mobilisation and De-mobilisation****8.3.1 Site Establishment**

The Contractor shall:

**SCOPE OF SERVICES FOR TRAIN LOADOUT AND MISCELLANEOUS SITE SERVICES**

- a) Be responsible and therefore shall provide all necessary plant, fittings, tools, distribution panels and the like to supply compressed air, water and electricity for its own use at the agreed Contractors Yard and/or workshop facilities location.
- b) Nominate its preferred size of the area for its temporary site facilities, including storage areas provided that the size of the area and location allocated to the Contractor for this purpose is at the sole discretion of the Company Representative. For the avoidance of doubt, supply and installation of security fencing will be the responsibility of the Contractor (if required);
- c) An area within the Contractor's Yard will be available to the Contractor which would be the preferred location for site offices, crib rooms and an ablution blocks which will be supplied by the Contractor and delivered to a laydown area adjacent the Contractor's Yard accordingly. The Contractor will be responsible and provide all necessary things in the establishment and installation of power to its facilities;
- d) Transport to Site all Contractor's plant, amenities, equipment, materials, fuel, consumables, store facilities, workshops and hydrocarbon storage necessary for the Contractor to complete the Services;
- e) Assembly and installation of mechanical equipment related to the Contractor's workshop, plant and equipment;
- f) Remedial Services in accordance with the engineering specifications of all deficiencies and error's identified through testing; and
- g) Provide a proposal for restoration of the Contractor's Yard after completion of this Contract.

**8.3.2 Mobilisation**

Prior to mobilising to site, the Contractor is required to conduct a Contractors Risk Assessment Workshop (CRAW) with key stakeholders to further identify and assess hazards and determine management controls. Hazards identified and outputs from the CRAW are incorporated into the Contractor's SMP and EMP, whereby further policies and procedures are implemented accordingly to ensure safe and efficient delivery of the Services.

The Contractor must allow for:

- a) site inductions, medicals and necessary training, VOC and equipping of all personnel, including subcontractors, in accordance with the Company's SMP;
- b) transport and delivery of all approved Contractor's plant and equipment;
- c) transport and delivery of all other support materials and equipment, including fuel and lubrication trucks, light vehicles, consumables spares required for commencement of the Services; and
- d) Supply personnel protective equipment for the Contractor's personnel engaged on the Site.

**8.3.3 Demobilisation**

Where the Contractor is required to:

- a) demobilise personnel and subcontractors;
- b) remove Contractor's plant and equipment;
- c) remove all other support materials and equipment, including fuel and lubrication trucks, light vehicles, consumables spares required for commencement of the Services;
- d) decommission buildings and infrastructure; and
- e) cleaning the Contractor's Yard as stipulated by the Company's EMP,

**SCOPE OF SERVICES FOR TRAIN LOADOUT AND MISCELLANEOUS SITE SERVICES****8.4 Infrastructure**

## a) Drawings

The Contractor shall provide the Company with as-built drawings of all newly constructed surface and sub-surface infrastructure that it constructs or installs including buildings, equipment, electrical, plumbing, pipes, lines and other fixtures. Drawings must be provided no later than thirty (30) days following the completion of construction. The drawings shall be true to scale and in the form of an electronic copy in format acceptable to the Company (acting reasonably).

## b) Lighting

The Contractor shall construct, install, inspect and maintain in good working order lighting as required in order to carry out Services (including all mobile or temporary lighting) and the Contractor shall:

- (i) ensure that lighting in all active working areas used exclusively or predominantly by the Contractor is adequate at all times for the safe performance of the loading services;
- (ii) ensure all work carried out during the hours of darkness or poor visibility can be undertaken safely;
- (iii) as a minimum provide adequate lighting in the following areas used exclusively or predominantly by the Contractor;
  - A major intersections;
  - B at all main stockpiles;
  - C at the workshop and other maintenance areas; and
  - D in any other working area deemed necessary by the Principal; and
- (iv) ensure that all lighting is installed and used so as not to create undue environmental or social nuisance.

**8.5 Company's Provided Items**

The Company will provide the following to the Contractor:

- a) Flight, meals and Accommodation as specifically described in Schedule 4 of this Contract.
- b) Contractor's yard and lay down area – the Company shall make available a cleared and compacted area to the Contractor for its temporary site facilities and storage of materials. The Contractor must:
  - (i) establish the Contractor's Yard with the necessary signage, fire-fighting equipment, plant and equipment of a standard to satisfy the requirements of the relevant Authorities;
  - (ii) be responsible for maintaining the Contractor's Yard in good condition and at all times in a neat and tidy state;
  - (iii) create a fire-break of an effective width around the circumference of the Contractor's Yard, which fire-break must be maintained free of combustible materials;
  - (iv) unless otherwise directed by the Principal, upon completion of the Services, decommission the Contractor's Yard and rehabilitate and restore the area of the Contractor's Yard to the satisfaction of the Principal (acting reasonably), including remove all waste, clean up



**SCOPE OF SERVICES FOR TRAIN LOADOUT AND MISCELLANEOUS SITE SERVICES**

- (including contaminated grounds) and submitting soil test reports;
- (v) take full responsibility for the security and protection of its Contractor's Yard and the Contractor's Plant and Equipment;
  - (vi) take all reasonable precautions to prevent the spillage of fuel, oil lubricants or other petroleum products. Any Contractor's Plant and Equipment leaking oil or fuel will not be permitted to work on the Site. The Contractor must immediately bring to the attention of the Principal any fuel or oil spillage and its immediate response to such spillage as per the Contractor's Environmental Management Plan
- c) Water Supply
- (i) The Company will use its best endeavours to arrange, at its cost, for the permanent supply of raw and potable water to the Site and to the Contractor at the Mine during the Term.
  - (ii) The Company is responsible for paying all charges levied on the consumption of water used by the Contractor during the Term.
  - (iii) The Contractor must perform the Services under this Agreement in a manner consistent with, and not do anything to prejudice, the agreement(s) under which water is supplied.
  - (iv) The Contractor must comply with the Company's procedures and plans for the management of water on Site, including as detailed in the EMS and EMP.
  - (v) The Contractor must use all reasonable endeavours to conserve and use water efficiently and to maximise the recycling of water.
  - (vi) The Company may direct a Variation requiring the Contractor to take steps in relation to water management, but where these steps result in the Contractor incurring additional costs, the Variation must include those additional costs, including any agreed or reasonable profit margin.
  - (vii) The Contractor must monitor and record all of its use of water and must provide the Company's representative with a summary of its water consumption on a monthly basis throughout the Term.
  - (viii) The Contractor must provide a monthly forecast of its expected water consumption to the Company for budgeting purposes.

**SCOPE OF SERVICES FOR TRAIN LOADOUT AND MISCELLANEOUS SITE SERVICES****9 DOCUMENTATION AND REPORTING**

The Contractor shall furnish all data as required by the **CORP-QA-SPC-1003\_0 CONTRACTOR QUALITY REQUIREMENTS SPECIFICATION**, and **1000-PC-SPC-1002 CONTRACTOR PROGRESS REPORTING AND PLANNING**. The format of the documentation shall comply with the requirements of this specification.

**9.1 Contractor Requirements**

Without limiting the Contractor's statutory obligations, the Contractor shall comply with the following minimum requirements:

- a) Provision of approved Contractors Project Health and Safety Management Plan and risk assessment;
- b) Provision of approved Sub-Contractors Project Health and Safety Management Plan;
- c) Provision of Site Safety Advisor details;
- d) All Employee details, as per section 7.1.2;
- e) Provision of personal protective equipment (PPE);
- f) Permitting of vehicles/equipment for access to site, i.e. Plant and Equipment inspections;
- g) Participation in safety meetings including holding of pre-start and toolbox meetings;
- h) Providing all necessary safe work equipment, and establishing all safe work methods necessary to carry out the Services;
- i) Obtaining all necessary work permits prior to commencement of the relevant Services activity (e.g. Ground disturbance permits);
- j) Provision of signage and hard barricading to Services area's as appropriate;
- k) Maintaining safe and secure storage of any potentially harmful substances;
- l) Controlling dust and wind-borne material emanating from the Site as a result of the Services;
- m) Maintaining sufficient illumination to complete the Scope of Services;
- n) Reinstating any excavations or other site civils so as to leave the Contractors designated area in a safe condition;
- o) Maintaining sufficient communication and liaison with the Company's Representative and other contractors on the Site, to ensure The Works are coordinated and undertaken to maintain safety of all persons on the Site within the Contractors area of control.
- p) Submission to the Company's Representative of HSEC statistics and reports as required.

**9.1.1 Personnel Inductions**

The Contractor shall ensure that any person involved in The Works entering the Site has received and successfully passed the Company's induction program.

The Contractor shall ensure all personnel have appropriate certificates of competency for work performed, such as operation of Front End Loaders. The Contractor shall provide a copy of the following information for each person involved in the project, in a form acceptable to the Company:

- a) Personal details;
- b) Driver's license details;
- c) Induction records / certificates;

**SCOPE OF SERVICES FOR TRAIN LOADOUT AND MISCELLANEOUS SITE SERVICES**

- d) Medical examination results, including Drug & Alcohol screens as required;
- e) Certificates of Competency / Training.

**9.1.2 Safety Advisor**

The Contractor shall nominate a Site Safety Advisor for the Contractor's team. The Safety Advisor shall be on site during all site works as far as reasonably possible. Details of the nominated Safety Advisor shall be provided for Company approval prior to site mobilisation. In respect of all matters concerning the safety of The Works and personnel on the Site, the Safety Advisor shall be deemed to have the responsibility and authority of a Contractor's Representative in accordance with the Contract.

**9.2 Environmental Management**

The KML document number **CORP-EN-PLN-1001** provides the basis for an Contractors Environmental Management Plan (**CEMP**) to minimize and manage the environmental impacts of the project through its construction phase.

Compliance with the requirements of this CEMP is mandatory for all personnel and contractors on any worksite forming part of The Services.

**9.2.1 Ground Disturbance Procedure**

No work is permitted until a Ground Disturbance Permit has been issued for each work area, in accordance with the Environmental Procedure **CORP-EN-PRO-1004 Approvals Requests and Ground Disturbance Procedures**. All works shall strictly comply with the conditions of the permit. Close liaison is required with the Company HSE Representatives and the Company Surveyors.

Spotters are required during the course of clearing works, to ensure that disturbance boundaries are not being exceeded.

Vegetation and Topsoil shall be stockpiled at locations approved by the Company's Representative on site.

**9.2.2 Dust Control**

The Contractor will be responsible for dust control in accordance with document **CORP-EN-PRO-1005 Environmental Procedure – Dust Management**.

**SCOPE OF SERVICES FOR TRAIN LOADOUT AND MISCELLANEOUS SITE SERVICES****10 QUALITY ASSURANCE AND TESTING**

The Contractor shall be responsible for all quality management activities necessary to assure that the Work meets the project requirements, including the activities of subcontractors and vendors.

The Contractor shall establish and maintain a Quality Program that is based on ISO 9001:2008 and complies with Karara Mining Limited requirements.

The Quality Program shall provide systems that ensure activities associated with carrying out the Work are auditable, including the activities of Subcontractors and Vendors.

**10.1 General Obligations**

- a) The Contractor must carry out the following:
- (i) Train loading of Product at the Company's train loading area from stockpiles at the location;
  - (ii) Preparation and rehandle of Product into loading stockpiles in time for a loading event (if required);
  - (iii) Maintenance of the Company's train loading area (including rail track area, but not the track itself);
  - (iv) Control of dust emissions within acceptable limits (as directed by the Company) at all times;
  - (v) The Company shall provide management of the operation of the train loading area as required by legislation and the Company's policies, procedures, plans and standards;
  - (vi) Ensuring good industry practice is employed and maintained in all areas of the train Loadout;
  - (vii) Provide sufficient labour and equipment resources to perform all Services within the Scope of Services;
  - (viii) Provide training for its employees and subcontractors to the AQTF standard, including ensuring employees involved in machine operations hold/maintain a nationally recognised accreditation in the relevant machines being operated to ensure the Contractor's obligations under this agreement are performed correctly and in a timely manner. In addition, the Contractor shall ensure training practices; competencies and records are maintained and available on request of the Company.
  - (ix) All loader operators shall possess a "RIIMPO304E Conduct Wheel Loader Operations" competency or equivalent. Once the certificate of competency has been ascertained and provided, then a "08AS001T\_Challenge and Familiarisation Assessment" shall be conducted to ensure that the operator is confident and competent with the loader in a train loading application.
  - (x) Ensure training systems meet the Company's standards, policies, procedures and documents as amended from time to time.
  - (xi) Maintain a skills register of all personnel to be used in the provision of the Services. The Contractor will keep the Company Representative advised of any changes, in the skills register, as they occur.
  - (xii) Original training documentation in the operation of mobile equipment will be presented to the Company, where copies will be kept on the Company's training database. Documentation shall be received prior to personnel being authorised to operate mobile equipment.

**SCOPE OF SERVICES FOR TRAIN LOADOUT AND MISCELLANEOUS SITE SERVICES**

- (xiii) Prepare, maintain and make available to the Company for inspection and copying, complete documentation relating to the Services;
  - (xiv) Perform any other activity incidental to and necessary for efficient loading of Product and provision of the Services; and
  - (xv) Do all things necessary to ensure that the Services areas are kept at all times in a safe and tidy condition.
- b) The loading services form part of a mining proposal to the Department of Mines and Petroleum and any design solution should be in accordance with the department's guidelines. The loading services must comply with any further conditions that may be placed upon the Parties by the Department of Mines and Petroleum and any other statutory body.
- c) All work is to be done in accordance with scope of work, schedules, drawings, specifications, statutory requirements, Australian Standards and directions of the Company.
- d) For the avoidance of any doubt, the Contractor will provide all things required, including labour, materials and equipment, transport to Site, construction, testing, commissioning, operation and maintenance of and for the Services other than any work and services described in section 8.5.

**SCOPE OF SERVICES FOR TRAIN LOADOUT AND MISCELLANEOUS SITE SERVICES****11 PROGRAMME**

The Contractor shall perform the Services based on the following timeline:

Item No.	Description	Completion
1	Commencement Date	As per Item 9 of Schedule 1 "Particulars"
2	Completion of Mobilisation	6 weeks upon Commencement Date
3	Operation Commencement Date When the Services under section 3.2 and/or section 4.5 are commenced	Upon the Completion of Mobilisation
4	Operation Completion Date	2 Years
5	Completion of Demobilisation	2 weeks upon the Operation Completion Date